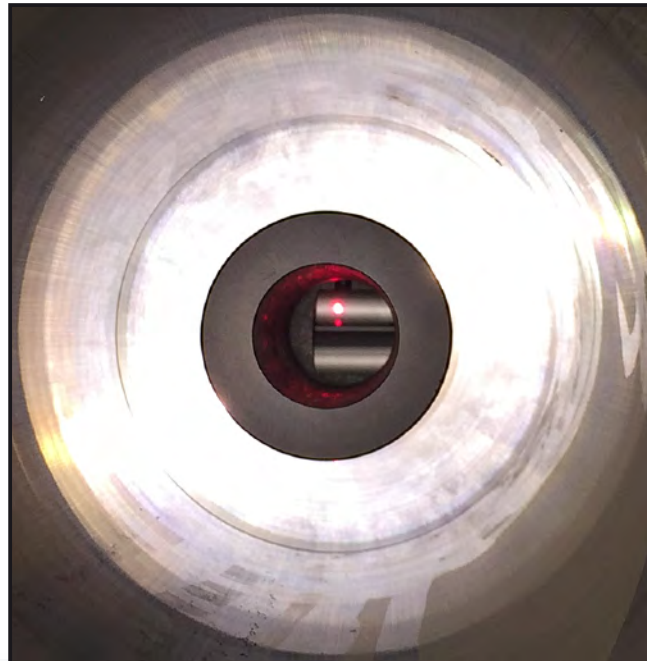


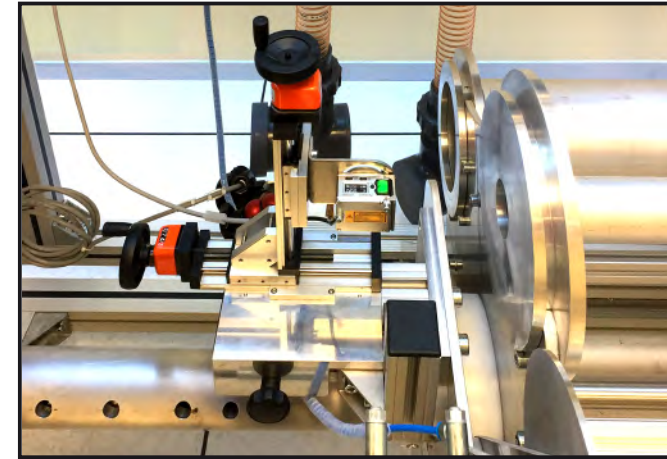
Calibration of Rotary Piston Meters via Laser Detection

Calibration of Rotary Piston Gas Meters via Laser Detection

The inotech laser detection system (LDS) has been developed to reduce the time for calibration of a rotary piston meter by counting the rotations of a piston. A laser-sensor, mounted on an adjustable holding fixture and a self-learning software module allows to use the equipment for nearly all rotary piston meters, independent from design, size, dimensions and manufacturer. The inotech LDS can be adopted to all inotech test rigs for industrial gas meters.



For the operation the inotech LDS, you simply position it in front of the rotary piston meter. Depending on the test rig, it can be at the inlet or at the outlet side. The laser beam must be focused on one of the pistons within the preset adjusting-distance range, height and angle.



When the piston rotates, each single revolution of the piston will be counted.

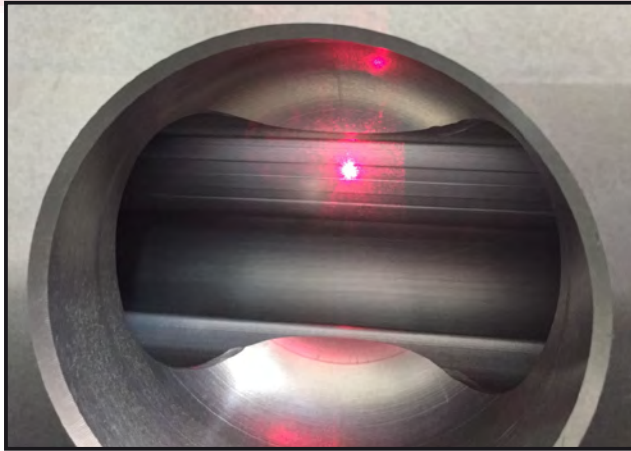
The pulse valence is measured by correlating the LF-pulses of the meter at a constant flow rate. Later on, the calibration of the meter at low flow rates could be performed with the LDS only.

The use of the inotech laser detection system (LDS) can reduce the calibration time for low flow rates from hours to some minutes.



Technical Data

Laser Detection System (LDS)



Technical Data

Type of the test facility	Equipment for gas meter test rig Laser Detection System (LDS) for Rotary Piston Meters
Type of Meters	<ul style="list-style-type: none">All sizes of rotary piston meters, manufacturer independent
Device/s under Test	<ul style="list-style-type: none">1 pc.Size G16 - G1000, others on request
Pulse Detection	Laser beam
Flow Range	0,1 - 1600 m ³ /h, others on request
Test Medium	Air at atmospheric pressure
Mode of Operation	<ul style="list-style-type: none">Positioning of the LDS in front of the rotary piston meterAdjusting of the laser beamMeasurement of the pulse value by correlation with the LF pulse generator of the meterCalibration of the rotary piston meter
Process Control	Integral component of the inotech test rig

PRODUCT RANGE

- Low pressure test rigs for domestic and industrial gas meters
- High pressure test rigs for gas meters designed as closed-loop or as bypass
- Mobile gas meter test rigs
- Modernization of test rigs
- Test rigs for gas pressure regulators
- Test rigs for water meters and heat meters
- Purging units
- Leakage test units

SERVICE PROGRAM

- Remote support and service support
- Spare parts
- Maintenance contracts
- Preventive maintenance
- Update service
- System availability service
- System extension
- Software support with customized adaptations
- Standard and tailor-made trainings



inotech Meter Calibration Systems GmbH
Obere Hardt 15
D-76467 Bietigheim/Baden
Phone: +49 (0) 7245 / 8 04 75-0
Email: info@inotech.eu