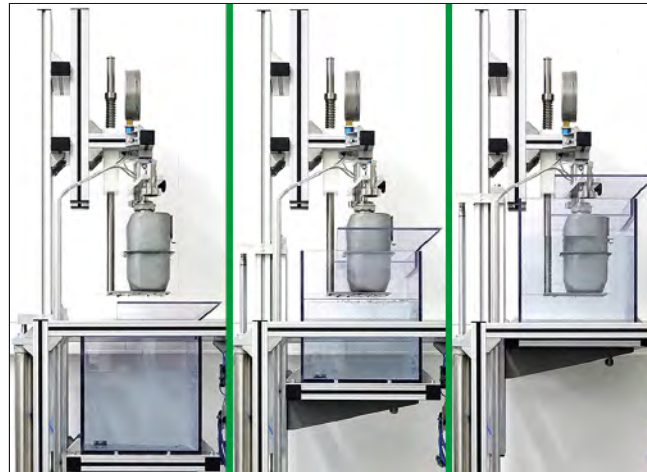




## Leakage Test Rigs for domestic Gas Meters

The inotech leakage test rigs for domestic gas meters allows to detect fast and reliable even the smallest leakages in the housing of a gas meter. The combination of the proved and safe method (to set the gas meter under pressure and immerse it in a water filled container), together with the semiautomatic test process allows to perform the leakage test within a very short test time and a high accuracy. The inotech leakage test rigs are designed to test manufacturer independent all kinds and types of gas meters in the sizes G1 to G16.

The flexibility to operate the leakage test rig with



different pressures and the optional connection to detect the leakage rate makes the test rig universally applicable. The test rig is equipped with adaptors to connect different versions of gas meters. For an easy handling and a fast operation all necessary displays and operating instruments are installed in front of the operator.

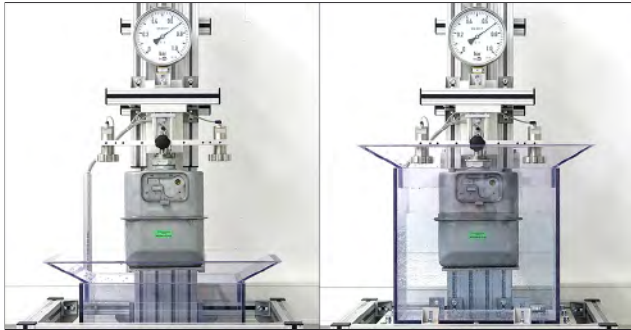
The proven and robust design of the test rig allows a user-friendly frequent and safe use already after a short training of the operating personnel.

The construction is built to last long with only a minimum of maintenance.



## Leakage Test Rigs for Gas Meters





## Technical Data

Type of the test facility	Leakage test rig for domestic gas meters
Type of Meters	<ul style="list-style-type: none"><li>All kinds of gas meters independent from the design or the operating principle</li></ul>
Device under Test	<ul style="list-style-type: none"><li>1 to 12 pcs.</li><li>Size G1 - G16</li></ul>
Mode of Operation	Apply an overpressure to the gas meter, immerse it into a water filled container, in case of a leak detect air bubbles and read the value of the pressure drop.
Display	System pressure and test pressure
Test Medium	Compressed air
Safety Equipment	Blow-off valve
Option	Electronic device for leakage rate measurement

- Low pressure test rigs for domestic and industrial gas meters
- High pressure test rigs for gas meters designed as closed-loop or as bypass
- Mobile gas meter test rigs
- Modernization of test rigs
- Test rigs for gas pressure regulators
- Test rigs for water meters and heat meters
- Purging units
- Leakage test units

- Remote support and service support
- Spare parts
- Maintenance contracts
- Preventive maintenance
- Update service
- System availability service
- System extension
- Software support with customized adaptations
- Standard and tailor-made trainings

